

POTTERY PLACE
CAREFULLY CRAFTED HOMES



EXCLUSIVE OVER 55
DEVELOPMENT

Woodbridge
Homes



POTTERY PLACE WOODLESFORD



Surround yourself with happiness

Experience a new way of life at Pottery Place, Woodlesford. From the stunning countryside to the convenient Rail and Motorway connections, the exclusive Pottery place development has been designed to suit a multitude of lifestyles. Whether your happy place is exploring the great outdoors or snuggling up on the sofa, you're sure to find it here...

EXPLORE WOODLESFORD

Woodlesford Lock is located 6 miles from Leeds on the Aire and Calder Navigation. It's a beautifully peaceful, rural spot in the heart of what is otherwise a very lively village. The area is well known for its rich variety of local wildlife and fantastic walking routes, including direct country walks to Temple Newsam and St Aidan's Nature Reserve to name just two! There are also plenty of picnic benches close to Woodlesford Lock and cycle trails through to Leeds City Centre and beyond!

The village of Woodlesford has its very own train station which operates 7 days per week and provides services to Leeds.

In the summer months there's also the Scarborough Express steam train which runs fortnightly connecting the village with the Scarborough coast. For travel by car, the village is also well connected to major roads being minutes from M1, M62 and A1.



THE ASHFORD



GROUND FLOOR

Kitchen/Diner

Living Area

Utility

FIRST FLOOR

Master Bedroom

Bedroom 2

Office/Dressing

Ensuite

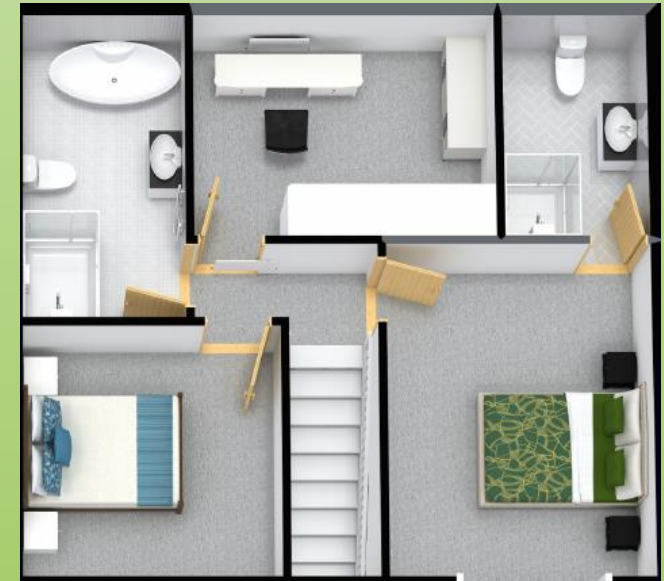
Bathroom

THE ASHFORD

Those looking for a modern house with attractive features and classic charm, should look no further than the Ashford



Ground Floor



First Floor



Beautiful Bathrooms

Pictures of the actual Ashford Bathrooms. A spacious 4 piece suite to the main bathroom, with En-suite to the Master Bedroom. Bathrooms and En-suites come with luxury tiles and contemporary sanitaryware.



ASHFORD KITCHEN

The kitchen is often the hub of any home, the Ashford Kitchen Layout delivers the hub, utilising a wrap around breakfast bar allowing for the subtle separation of spaces with different functions. Used to divide and define the practicality of the food preparation area from the sociability of the dining and family room.



Traditional and modern options available...

Different unit ranges and colours can be selected from, all accompanied with high end specification built in appliances and Silestone quartz worktops.

Providing all the ingredients for the perfect kitchen !



RECEPTION ROOMS

The Ashford has a large open plan living area adjoining the dining area with large Bi-Fold doors providing access to a good size laid to lawn garden area accessed via a block paved patio.

The open plan area will have a beautiful high specification Luxury Vinyl Tile (LVT) Flooring with chrome sockets throughout.

There's an additional reception room which can be Used as study/office or playroom.



BEDROOMS

The Ashford has 2 Double Bedrooms, with the Master having the benefit of an En-suite. There's also the potential of a dressing room as an optional extra for those purchasing off-plan!

All bedrooms come with Luxury carpets from the Cormar sensations range with a choice of colours for those reserving off-plan.



WHERE TO FIND US

All this just minutes from M1, M62 and A1.



Explore Woodlesford Lock

Located just five miles from Leeds, Woodlesford Lock on the Aire & Calder Navigation, is one of the best places to escape the city and enjoy country walks.

